



# LAURIE RIVER LODGE TRIP PLANNING GUIDE

2012 EDITION

# INTRODUCTION

As lodge owners and outfitters in northern Manitoba Erin and I take our responsibilities to our customers very seriously. We understand that it is the little things that turn a mediocre trip into a complete success story. The information and tips included in this booklet should help all of our customers, especially first timers, know what to expect during their trip to Laurie River Lodge.

While it would be impossible to foresee every scenario or answer every question I will attempt to touch on each aspect of your trip and hopefully will give you an accurate and informative synopsis of what you can expect from the time you book your trip until you arrive back in your home city after the adventure.

The information and tips in this book will help you, our customers, understand the following:

- What you can expect from us as outfitters
- What we will expect from you as our clients
- Where we are and how will you get to us
- What types of fish will you catch and with what equipment
- What is required in terms of clothing and what temperatures you can expect
- What types of accommodations will you be staying in
- What is available in terms of communications
- What is available in terms of medical care
- What can you expect when crossing the USA / Canada border
- What are some of the additional cost associated with the trip

I cannot over emphasize the importance of preplanning and preparation. At a remote, fly-in camp there is no such thing as a quick trip to town. If you have read this book and still have questions we may be reached at 1-800-426-2533 anytime. Please feel free to call.

Sincerely,

*Brent, Erin, Chase and Madison Fleck*

Laurie River Lodge



# HOW TO USE THIS GUIDE

This guide has been created in order to help our guests prepare for and organize their 2012 Northern Manitoba Fly-in fishing adventure at Laurie River Lodge. It contains helpful information that, if followed, will take much of the guess work out of your trip planning activities.

There are 4 different sections in this guide:

1. The first section is for all Laurie River Lodge and Kamuchawie Outpost Camp guests as well as our Spring Black Bear Hunters. It has helpful information about travel planning, border crossings, hotel telephone numbers and general information that all of our guests should know.
2. The second section is specifically written for those guests who will be staying at our American Plan Lodge. It contains information about the meals, guides, boats, motors, gratuities, tackle, lodge policies, fish and a host of important facts that will help you prepare for your American Plan Lodge trip.
3. The third section contains information specific to those guests staying at Kamuchawie Outpost Camp. It outlines our food package, equipment, accommodations and many other important policies and facts that an outpost fishermen needs to know.
4. Finally, the fourth section is specifically geared to our Spring Black Bear Hunters. This is where you can find information about bringing firearms into Canada, taxidermy, export permits, hunting regulations and lodge policies.

Please take the time to read and understand the information contained in the section that pertains to you. I have tried to make the guide as specific and comprehensive as possible while keeping it easy to read and understand. **Look for really important information to be highlighted in yellow like this sentence.**

Thank you for choosing Laurie River Lodge as your 2012 northern Manitoba fly-in fishing destination. Erin and I are looking forward making your time at our little bit of paradise your best fishing or hunting vacation ever.

See you in Manitoba this summer. Have a great day from your Canadian friends at Laurie River Lodge.

# TABLE OF CONTENTS

Sec.#	Topic
1-0	General information for all guests
1-1	Travel, Hotel and Airline Info
1-2	2012 Changeover Schedule
1-3	Crossing The Border
1-4	Things To Do In Winnipeg
1-5	Packing For The Trip
1-6	Hospitals, Medical Emergencies, Insurance
1-7	Tackle, Sundry Items, Snacks & Alcohol
1-8	Telephone & Internet
1-9	What You Can Expect From Us – What We expect From You
1-1	Fishing Tackle & Equipment
1-1	Summertime Temperatures
1-12	Payment Policies
1-13	Notes Page
2-0	Information for American Plan Lodge Customers
2-1	Introduction to American Plan Lodge
2-2	Home Base For Your Fly-in Fishing Adventure
2-3	American Plan Meals
2-4	What To Pack
2-5	Trip Costs
2-6	Notes Page
3-0	Information for Kamuchawie Outpost Camp Customers
3-1	Introduction to Kamuchawie Outpost Camp
3-2	Food Package Information
3-3	Guide Availability
3-4	Emergency Communications
3-5	What To Pack
3-6	Trip Costs
3-7	Notes Page
4-0	Information for Spring Black Bear Hunters
4-1	Introduction To Various Camps, Including Accommodations
4-2	What You Need To Do To Insure Success
4-3	Choosing A Weapon
4-4	How Do I Get My Weapon Into Canada
4-5	Information About The Camps
4-6	Emergency Communications
4-7	What To Pack
4-8	Trip Costs
4-9	Notes Page
5-0	Closing
5-1	Important Telephone #'s, Addresses & E-mail Addresses

# SECTION #I-0

## GENERAL INFORMATION FOR ALL GUESTS

- I-0 General information for all guests
- I-1 Travel, Hotel and Airline Info
- I-2 2012 Changeover Schedule
- I-3 Crossing The Border
- I-4 Things To Do In Winnipeg
- I-5 Packing For The Trip
- I-6 Hospitals, Medical Emergencies, Insurance
- I-7 Tackle, Sundry Items, Snacks & Alcohol
- I-8 Telephone & Internet
- I-9 What You Can Expect From Us – What We Expect From You
- I-1 Fishing Tackle & Equipment
- I-1 Summertime Temperatures
- I-12 Payment Policies
- I-13 Notes Page



## SECTION I-I TRAVEL, HOTEL & AIRLINE INFO:

By now we should have picked dates and, if you haven't already done so, you should be making your airline reservations into Winnipeg. Remember that you will need to arrive in Winnipeg the afternoon before your trip is scheduled to start at Laurie River Lodge. You should plan to be at the Bearskin Airlines counter in the Winnipeg International Airport at 05:15 AM on the morning your trip is scheduled to start. There will be staff at the counter to assist you with the preboarding procedure. We will have you back in Winnipeg by approximately 12:30 PM on the afternoon of the day you depart from Laurie River Lodge. I do not suggest booking a flight out of Winnipeg before 2:00 PM as you will have to pre-clear US Customs in Winnipeg before boarding your flight back to the US. I have put our 2012 Trip Schedule on the following page to make it easy for you to select the days that you should be traveling.

I know that many of you are seasoned travelers and like to make your own flight and hotel reservations and there is no reason why you cannot make the reservations on your own. The toll free number for Northwest Airlines is 1-800-225-2525 their web site is [www.nwa.com](http://www.nwa.com). United Airlines toll free reservations number is 1-800-864-8331 or you can contact them via E-mail at [www.ual.com](http://www.ual.com). However, if you want to do things the easy way we have negotiated a special rate with Northwest Airlines for transportation from any Northwest serviced airport to Winnipeg. To access these rates simply call Silvana at Canada One Travel Partners in Winnipeg and ask her to make your flight and hotel reservations for you. Silvana may be reached at 1-204-975-4785 or via E-mail at [svincent@canada-one.com](mailto:svincent@canada-one.com)

Once you have secured your transportation into Winnipeg please take the time to drop me an E-mail or call me with your flight numbers and arrival times so I can add that information to my guest profile. It will save me time in case of travel problems.

To keep things simple and easy we are asking all of our customers to stay at the Sheraton 4 Points Hotel right at the Winnipeg International Airport. We have negotiated a special rate of \$130.00 Canadian for a double room. The Sheraton is located right at the airport eliminating the need for transportation to an off sight hotel. There is an excellent restaurant, sports bar and exercise facilities. If you need to contact the Sheraton 4 Points Hotel they may be reached at 204-775-5222. Tell them you are traveling to Laurie River Lodge.

For those of you who will to drive to Winnipeg you basically need to follow the same schedule. Plan to arrive in Winnipeg in time to get to the Bearskin Airlines counter at 05:15 AM on the morning your trip is scheduled to start. There is secure parking in the Winnipeg International Airport Long Term Parking Lot.

Customers driving all the way to Lynn Lake should plan to be at the Wing Over Kississing Water base by 09:00 AM on the morning their trip is scheduled to start. Some guests that drive to Lynn Lake find it is easier to spend the night in Thompson, MB and make the last 4 hour leg to Lynn Lake on the first morning of their trip. There are several hotels in Thompson, here is a list of their names and telephone numbers in order of preference: Days Inn (204-778-6000), Mystery Lake Motor Hotel (204-778-8331), Country Inn and Suites (204-778-8879) and Pats Paint Lake Resort located about 10 miles South of Thompson (204-677-9303). For those guests who prefer to go all the way to Lynn Lake you have your choice of D&D's B&B (204-356-8307), The Lynn Inn (204-356-2433), The Bronx Hotel (204-356-2471) or Betties Bed & Breakfast (204-356-8709).

Guests flying private aircraft into Lynn Lake can get airport information, setup fuel and get other pertinent flying information by calling the Lynn Lake Airport Authority at 1-204-356-8552. Information is also available from the Winnipeg Flight Services Station at 204-983-5290. Please provide us with your aircraft type, Registration and ETA in Lynn Lake so we can have the float planes ready to meet you.

## SECTION I-2 2012 CHANGEOVER SCHEDULE:

Trip #1 May 28 <sup>th</sup> – June 1 <sup>st</sup>	(Monday – Friday)	Trip #15 July 23 <sup>rd</sup> – July 27 <sup>th</sup>	(Monday – Friday)
Trip #2 June 1 <sup>st</sup> – June 5 <sup>th</sup>	(Friday – Tuesday)	Trip #16 July 27 <sup>th</sup> – July 31 <sup>st</sup>	(Friday – Tuesday)
Trip #3 June 5 <sup>th</sup> – June 9 <sup>th</sup>	(Tuesday – Saturday)	Trip #17 July 31 <sup>st</sup> – August 4 <sup>th</sup>	(Tuesday – Saturday)
Trip #4 June 9 <sup>th</sup> – June 13 <sup>th</sup>	(Saturday – Wednesday)	Trip #18 Aug. 4 <sup>th</sup> – Aug. 8 <sup>th</sup>	(Saturday – Wednesday)
Trip #5 June 13 <sup>th</sup> – June 17 <sup>th</sup>	(Wednesday – Sunday)	Trip #19 Aug. 8 <sup>th</sup> – Aug. 12 <sup>th</sup>	(Wednesday – Sunday)
Trip #6 June 17 <sup>th</sup> – June 21 <sup>st</sup>	(Sunday – Thursday)	Trip #20 Aug. 12 <sup>th</sup> – Aug. 16 <sup>th</sup>	(Sunday – Thursday)
Trip #7 June 21 <sup>st</sup> – June 25 <sup>th</sup>	(Thursday – Monday)	Trip #21 Aug. 16 <sup>th</sup> – Aug. 20 <sup>th</sup>	(Thursday – Monday)
Trip #8 June 25 <sup>th</sup> – June 29 <sup>th</sup>	(Monday – Friday)	Trip #22 Aug. 20 <sup>th</sup> – Aug. 24 <sup>th</sup>	(Monday – Friday)
Trip #9 June 29 <sup>th</sup> – July 3 <sup>rd</sup>	(Friday – Tuesday)	Trip #23 Aug. 24 <sup>th</sup> – Aug. 28 <sup>th</sup>	(Friday – Tuesday)
Trip #10 July 3 <sup>rd</sup> – July 7 <sup>th</sup>	(Tuesday – Saturday)	Trip #24 Aug. 28 <sup>th</sup> – Sept. 1 <sup>st</sup>	(Tuesday – Saturday)
Trip #11 July 7 <sup>th</sup> – July 11 <sup>th</sup>	(Saturday – Wednesday)	Trip #25 Sept. 1 <sup>st</sup> – Sept. 5 <sup>th</sup>	(Saturday – Wednesday)
Trip #12 July 11 <sup>th</sup> – July 17 <sup>th</sup>	(Wednesday – Sunday)	Trip #26 Sept. 5 <sup>th</sup> – Sept. 9 <sup>th</sup>	(Wednesday – Sunday)
Trip #13 July 17 <sup>th</sup> – July 21 <sup>st</sup>	(Sunday – Thursday)	Trip #27 Sept. 9 <sup>th</sup> – Sept. 13 <sup>th</sup>	(Sunday – Thursday)
Trip #14 July 21 <sup>st</sup> – July 23 <sup>rd</sup>	(Thursday – Monday)		

## SECTION I-3 CROSSING THE BORDER:

While crossing into Canada is normally a pretty routine thing it is always wise to remember that you are crossing into a foreign country and there are protocols and procedures that help make the process easy.

First and foremost remember that for the few minutes that you are being interviewed by a Canadian Customs Officer that individual has the future of your fishing trip in his hands. It pays to be attentive and listen carefully to his questions. Answer him clearly and honestly, like the US Customs Officials they are trained to look for people who are trying to deceive them.

**Please Note: The United States Government requires all travelers crossing into the USA (residents and nonresidents) to have a valid Passport. This includes US citizens traveling back to the USA. The passport rule now applies to all modes of transportation entering the US. We are advising all of our customers to plan ahead and get their Passports as soon as possible.**

You will be asked if you have any alcohol or cigarettes with you, all of these items must be declared. You are allowed to bring 1- 26 ounce bottle of hard liquor or 24 – 10 ounce cans of beer and 1 carton of cigarettes into Canada without paying duty but you still need to declare it at the border. A better choice may be to use the duty free facilities at the airport.

You will also be asked if you have any firearms with you. Unless you are coming on a hunting trip there is no need to bring a firearm to Laurie River Lodge and you are advised to leave them at home. If you are coming on a hunting trip there is information in section 4 that you need to read.

**If you are bringing a minor (someone under 18 years of age) with you and you are not the sole legal guardian (Example = Grandchild) you should have a notarized letter from the Child's legal guardian (both parents if available) giving you permission to take him or her out of the country in addition to the ID mentioned above. Even fathers who are bringing their sons or daughters on a trip should have a notarized letter from the child's other legal guardian giving permission to travel. This little thing can save many headaches at the border.**



Occasionally there are issues that arise with Customs Officers that could lead to a confrontation. I urge you to maintain a calm, courteous composure. There is nothing to be gained, and much to be lost, by being confrontational with a Customs Officer. If an issue does arise work it out the best you can and politely ask for his identification number, document the issue as best you can and give the information to me when you arrive at Laurie River Lodge. As the Past President of the Manitoba Lodges and Outfitters Association I have access to the proper channels to submit complaints about overly aggressive or unfriendly customs officers and, believe it or not, I get results when I submit a complaint in the proper fashion.

## SECTION I-4 THINGS TO DO IN WINNIPEG:

Well here you are, across the border and all checked into your hotel now what should you do? Depending on the arrival time of your flight you might want to just grab a quick bite to eat at the Sheraton Restaurant and get a good nights sleep or you might want to see what downtown Winnipeg has to offer. If the later is the case you will find no end to the exciting things to do, I suggest you check out the **City of Winnipeg Web site at [www.mywinnipeg.com](http://www.mywinnipeg.com)** to get some ideas. If you are looking for a really nice meal to start off your vacation I do have a suggestion. There is an **excellent steak house on 529 Wellington in downtown Winnipeg** coincidentally called the 529 Wellington. This is without a question the finest Steakhouse in Winnipeg and I strongly suggest a visit, in fact, I have already contacted the management to let them know that a number of our customers would be frequenting their restaurant this summer and they are waiting for your call. Simple call Jim or Carolyn at 204-487-8325 and let them know you are a Laurie River Lodge guest and you would like a reservation. It is about a \$10.00 cab ride form the Sheraton to the 529 Wellington. You may also make advance reservations at the 529 and outer great restaurants in Winnipeg via E-mail at [www.opentable.com](http://www.opentable.com).

## SECTION I-5 PACKING FOR THE TRIP:

Without a question deciding what to bring and what not to bring can dramatically affect the success of your trip. Since the clothing requirements for the American Plan Lodge, Kamuchawie Outpost Camp and a Spring bear Hunt will vary I will cover the clothing issue in each of those sections as well but here are some of the things that **all of our customers** will need in order to get the most from their trip.

- Identification, Passports, Airline Tickets
- Personal Items, tooth brush, comb, deodorant razor & shampoo
- Medications, prescription drugs, Advil or Alive for sore muscles
- Contact solution & extra contacts or glasses
- Camera, extra batteries and plenty of film if the camera requires it.
- Small flashlight with extra set of batteries for finding your way to the cabin after dark
- Good quality, two piece, Suite Type Rain Gear – not a poncho
- Ankle high waterproof boots or shoes
- One pair of light shoes to change into after fishing
- A hat that protects you from the sun
- I pair of light gloves



- 1 small can bug repellant
- 1 small bottle sunscreen
- Cigarettes as required – your vacation is not the time to try to stop smoking
- 2 pairs of fishing clothes and one set of travel clothes. 8-day customers should bring a couple of extra sets of fishing clothes.
- Polarized Sun Glasses (Rapala makes an excellent set of fishing glasses)
- A Leatherman or Gerber folding tool is handy but not essential

**PLEASE TRY TO KEEP YOUR CHECKED LUGGAGE AT 50 LBS / PERSON.**

## **SECTION I-6 HOSPITALS, MEDICAL EMERGENCIES & INSURANCE:**

Although Laurie River Lodge is located in a remote part of Northern Canada we have surprisingly quick access to medical treatment. Lynn Lake is a mining town and mining towns always have good hospitals. In most cases we can have fishermen in need of medical attention at the Lynn Lake hospital with one hour. For the more serious problems there is a medivac flight available from Lynn Lake to the University Hospital in Winnipeg. This flight takes less than 3 hours. You should check with your medical insurance provider to see what they offer in terms of coverage while you are out of the country. In some cases it is necessary to purchase a short term supplemental package.

## **SECTION I-7 TACKLE, SUNDRY ITEMS, SNACKS AND ALCOHOL:**

We have a fairly well stocked tackle, snack & clothing store setup in the main lodge and Laurie River Lodge is a Manitoba licensed liquor vendor. We offer all the premium brands of hard liquor plus beer and a decent wine selection. When it comes to tackle purchases it is much cheaper for you to purchase your lures in the US and bring them up with you. There are hundreds of tackle dealers in the US who sell lures suitable for use in Canada. I have found Cabela's and Bass Pro Shops to offer the most selection. Cabela's can be reached at 1-800-237-4444 or at [www.cabelas.com](http://www.cabelas.com). Bass Pro can be reached at 1-800-227-7776 or at [www.basspro.com](http://www.basspro.com). More detailed information on lure choices can be found under the Fishing Information and Equipment Section.

## **SECTION I-8 TELEPHONE AND INTERNET SERVICE:**

We have telephone communications via satellite that is available to our guests. There is a flat fee of \$2.00 / minute to use the Sat Phone. In an emergency family members can reach you at the lodge by dialling 1-800-426-2533. While this telephone is available to our guests we do ask that you keep your calls to a minimum as we have only 1 line.

Wireless high-speed internet is available in the main and guest cabins. This is a free service and those of you with wireless capable laptops can bring them along and access the internet and your E-mail accounts while you are at the lodge.

## SECTION I-9 WHAT YOU CAN EXPECT FROM US:

As the operators of a full service, first class American Plan Fishing & Hunting Lodge Erin and I realize that the comfort, safety and enjoyment of our guests rest fully on our shoulders. We are owner operators and as such are always on hand to oversee the smallest details of your trip. We hire a competent staff, provide modern facilities, safe and reliable equipment and ensure that necessary supplies are always available. In order to keep things running smoothly and ensure a high quality trip for all of our customers we have found it necessary to setup some guidelines or policies that we ask everyone to adhere to. Here are some of those policies:

All aircraft are subject to weight restrictions. Please keep your personal baggage, including rods & tackle, at 50 lbs. or less, guests with more than 50 lbs of baggage will be subject to excess baggage charges.

In Manitoba fishing with barbless hooks is mandatory. Please be prepared to bend down the barbs on any lures that you have tied to a fishing rod. You are not required to have the lures in your tackle box debarbed until you begin to use them. At Laurie River Lodge we strongly support barbless fishing; it is easier on the fish and makes you a better fisherman. You might even find that you want to adopt the practice at home.

Even though we are fishing an ultra remote portion of northern Canada studies have shown that trophy size Northern Pike (41" +) are over 20 years old, constant removal of Pike from a system will quickly deplete the supply of existing and future trophies. We ask our customers to release all Northern Pike. Since our customers are the only fishermen using these waters the catch and release program will ensure that we have a good supply of trophy fish forever.

No day of fishing is complete without shorelunch. Our guides will keep enough Walleye for a delicious shorelunch every day. In addition the Manitoba limit on Walleye is 4 fish per person. If you wish to take your limit of 4 Walleye home with you just let your guide know and he will keep 4 fish between 18 & 22 inches for you to take home. We will fillet your fish, freeze them and pack them in special cooler bags for your trip home.

We run a complimentary hard liquor bar in the main lodge. I do, however, charge for beer, wine and soda pop consumed while you are at Laurie River Lodge. I also have hard liquor for purchase if you want an additional bottle for your cabin.

We take great care when hiring our staff; however the subject of Native Guides must be touched upon. We use Cree Indian guides from the town of Pukatawagon in northern Manitoba. They are wonderful people and fun to fish with however, like all Native North Americans, they have a basic intolerance for alcohol. Please do not give my guides alcohol under any circumstances. This is rarely a problem and by telling you in advance I hope to avoid it altogether.

Although northern Canada is relatively safe in terms of wildlife there are a few animals such as Bears, Wolves, Moose, Caribou, Wolverine etc. that can turn violent in the right circumstances.

While it is exciting to see these animals in their natural environment we ask that you exercise great caution when in the close proximity of wild animals. Listen to your guide and do exactly as he asks.

Power generation costs money and in an effort to keep costs at a minimum I will shut off the generator at midnight and restart it at 05:30 AM on a daily basis. If you need power for medical reasons we can make arrangements to leave the power on or supply you with inverters and batteries.

We are fishing and hunting license vendors. All customers will be issued the appropriate license upon arrival. It is your responsibility to keep those licenses on your person while engaged in hunting or fishing activities.

You are responsible for the safe use of your equipment. Guns, fishing rods, hooks and knives can all be very dangerous if used incorrectly. Please exercise care and listen to your guides at all times.

Laurie River Lodge is not a non-smoking facility but we ask that you take non-smoking guests into consideration when using tobacco products. The outdoor porches on each cabin and a fully covered, screened in porch on the main lodge are excellent places to enjoy your favourite Cuban cigar.

## SECTION 1-10 FISHING INFORMATION AND EQUIPMENT:

At Laurie River Lodge our guests have the opportunity to fish for several different species of fish. The biggest and most popular is the Northern Pike. Walleye are always fun to catch and their widespread popularity as the perfect fish for shore lunch keeps them high on every fisherman's want list. Lake Trout are often underrated as a sport fish but they should not be overlooked. These cold water carnivores are strong fighters that can grow to over 70 pounds. The 6 to 10 pounders make an excellent shore lunch. The Laurie River also offers incredible White Fish, Perch and Maria but most fishermen prefer to concentrate on the Big Three.

### NORTHERN PIKE

For many anglers merely mentioning Northern Pike brings back memories of fast swimming, hard hitting action. Pike are indigenous to nearly all water in northern Canada. They will grow to over 30 pounds and more than 4 feet in length. Sharp teeth make steel leaders necessary.



### What To Bring For Pike:

Most fishermen prefer a medium to medium heavy action 2-piece rod

15 to 17 pound test line is a good choice

Either Spinning or bait casting reels will work fine.

Pike also respond well to fly fishermen an 8-9-weight rod, weight forward sinking line and large streamer fly's are preferred

Remember you will be casting this rod a reel combination several hundred times per day

Favourite lures include but are not limited to:

- #2 & #4 red & white Daredevil spoons
- #2 & #4 yellow and red 5 of Diamonds by Len Thompson
- ¾ oz and 1 ¼ oz Johnson Silver Minnow Weedless in gold, silver & perch
- # 4 & #5 Mepps Aglia with a gold blade
- All Rapala top water, diving & countdown lures 3" or longer
- All top water baits including spinner and buzz baits
- Blue fox pixie spoons in all colors and at least 2 ½" in length
- Cabela's Real Image weedless spoons in ¾ oz size
- Lucky Strike Half Wave Spoons in gold with red & white and silver with red & white – 1 ¼ oz work best
- Red Eye Wiggler lures in all colors – the 3" by 1 oz works well
- Good quality 30 pound test steel leaders with ball bearing swivels are an necessity

This is a list of lures that no Pike fisherman should be without. I realize that there are hundreds of other lures that will work well on Pike but if you have the ones listed here you will have a pretty good start on Pike fishing. If you are a bass fisherman do not hesitate to bring your Bass lures with you, especially the top water stuff. Pike will tear them up. It is also a good idea to bring an extra rod along in case yours gets broke. I suggest a middle of the road spinning outfit that can double as a walleye or pike rod.

### WALLEYE

Shore lunch!! Need I say more? Walleye rank among the tastiest of all freshwater fish and no shore lunch is complete without them. These tasty fish will get up to 10 pounds and over 30 inches in length. Catching Walleye requires a bit of finesse but once mastered they can provide hours of fishing fun.



### What To Bring For Walleye:

Most fishermen prefer a light to ultra light 5' one piece rod

8-pound test line is a good choice

Either Spinning or bait casting reels will work fine.

Remember Walleye take finesse. A sensitive rod helps feel the bite.

Favourite lures include but are not limited to:

- 1/4 oz & 3/8 oz lead head jigs tipped with a frozen minnow work best (we have frozen minnows at the lodge).
- Diving Rapala lures in the 2" size will also catch Walleye in running water
- I find white, yellow, chartreuse, black and gold to be popular colors

As with the Pike lures this is by no means a complete list of every lure that will catch a Walleye but if you have a good supply of the lures mentioned above you defiantly will not go hungry at shore lunch.

Our guides will have hook removal tools and landing equipment in the boat.

### Lake Trout

Hang on to that rod tight. Lakers are known for their strength. It is not unusual to have one almost to the boat and then see him make a dive into 100 feet of water. Lake Trout can be over 70 pounds and 40" in length, they will eat almost anything that you can get in front of them but sometimes that can be tricky.



### What To Bring For Lakers:

Most fishermen prefer a medium heavy to heavy action rod (I have loaner rods at the lodge)

20-pound test line is a minimum choice

Bait casting or level wind reels are necessary.

Lakers tend to eat big heavy lures and fight hard when hooked. Much of the tackle you use for Northern Pike will work for Trout. I have always found that shiny lures work best.

Favourite lures include but are not limited to:

- #4 red and yellow 5 of Diamonds by Len Thompson
- Red Eye Wigglers in gold and silver. I recommend the 3" by 1-oz size
- Doctor spoons in gold, silver and red/white in the 4 1/2" size
- Williams Wobblers in all colors. The 4" by 1-oz size is recommended.
- 2 oz Lead Head Jigs with stinger hook in white, yellow & chartreuse

## **SECTION I-I I SUMMERTIME TEMPERATURES:**

As a rule the summertime weather in northern Manitoba is quite comfortable. The days are long with lots of sunshine and rain generally comes in the form of afternoon thundershowers. However, you will be fishing a mere 300 miles West of the Hudson's Bay and occasionally we will get a northeast weather pattern that brings high winds and rain off the bay and right into our laps. These systems can (but rarely do) last for 48 hours or more. Hence the reason for the good quality, two piece, suite type rain gear mentioned earlier in this guide. It is always a good idea to dress in layers of clothing that can be added or removed as the weather dictates. This is not a fashion show, nobody cares what you look like as long as you are warm and dry

you will be comfortable. Remember that the clothes you wear fishing need to be loose fitting to allow full movement of your arms when you are casting and your whole body when you are fighting that Pike of a lifetime.

The table below depicts the average summertime temperatures at Laurie River Lodge over the last three summers. It is important to remember that the temperatures quoted in this table are averages. The actual temperatures can vary substantially from the averages. For an accurate forecast please log on to [www.laurieriverlodge.com](http://www.laurieriverlodge.com) and click the current forecast button. You will be routed to Environment Canada's web site where you will see a current and five day forecast for the Lynn Lake area. This is the best, most accurate, weather forecasting site I have been able to find for our area.

Trip #	Dates	Average daily High	Average Daily Low
Trip # 1	6/1 – 6/5	57	30
Trip # 2	6/5 - 6/9	60	35
Trip # 3	6/9 - 6/13	66	40
Trip # 4	6/13 - 6/17	68	42
Trip # 5	6/17 - 6/21	69	44
Trip # 6	6/21 - 6/25	72	44
Trip # 7	6/25- 6/29	74	49
Trip # 8	6/29 – 7/3	74	48
Trip # 9	7/3 - 7/7	72	48
Trip # 10	7/7 - 7/11	73	48
Trip # 11	7/10 - 7/14	74	49
Trip # 12	7/11 - 7/19	77	52
Trip # 13	7/19 - 7/23	78	52
Trip # 14	7/23 - 7/27	70	48
Trip # 15	7/27 – 7/31	72	48
Trip # 16	7/31 - 8/04	70	51
Trip # 17	8/4 - 8/08	70	52
Trip # 18	8/8 - 8/12	70	53
Trip # 19	8/12 - 8/16	78	53
Trip # 20	8/16 - 8/20	72	49
Trip # 21	8/20 - 8/24	69	47
Trip # 22	8/24- 8/28	72	47
Trip # 23	8/28 – 9/1	71	45
Trip # 24	9/1 – 9/05	68	40
Trip # 25	9/05 - 9/09	65	36
Trip # 26	9/09-9/13	60	30

Remember that you are travelling to northern Canada, although the temperatures are normally quite comfortable, Mother Nature can occasionally throw a little cold weather or way. It is best to be prepared with good rain gear and warm clothing. By the best clothing you can afford – you will not regret it!!

## SECTION 1-12 PAYMENT POLICIES:

For Erin and me running a first class fly-in fishing lodge in northern Manitoba is not only a passion it is also a business! As such we rely on Laurie River Lodge, and you our guests, for our living. The money you spend at Laurie River Lodge not only keeps the place operating but it also supplies food, shelter, transportation and education for my family.

Like all successful business owners we have had to set some guidelines with regard to the collection of funds.

Here is how it works:

Once you decide to fish or hunt with us at Laurie River Lodge and we have picked appropriate dates I will request a \$750.00 / person deposit from you. This deposit does a couple of things for both of us. First it assures me that you are actually going to make the trip and second your deposit gives me some much needed wintertime cash flow. Once I know for sure that a group has made reservations I can move forward with booking charter seats, assigning guides and making cabin reservations. **The deposit is due within 7 days of the time that you make your reservation. It is important to realize that no airline, cabin or guide reservations will be made for you until your deposit is received. Deposits are non-refundable; however, should it become necessary to cancel your trip we will credit your deposit to your trip the following year.** Deposits are also transferable from one guest to another so if one member of your group is unable to make the trip you can substitute another individual without losing the first person's deposit as long as the group size remains constant. Deposits may also be carried over, in full to a trip the following year but only the following year. When we receive your deposit we will send you a letter confirming its receipt along with this trip planning guide so you can start putting your gear together for your trip.

Starting about March 15<sup>th</sup> Erin will begin sending out invoices for the balance of your trip. On this invoice there will be a space for things like optional fly-outs, sundry purchases etcetera. **In all cases Trip balances are due by May 1<sup>st</sup>.** Once in a while we have a customer that sends in a prepayment and then has some type of unexpected emergency arise that simply does not allow him to make the trip. No problem, if it is more than 45 days before your scheduled arrival at Laurie River Lodge you have your choice of asking for a refund or simply holding the prepayment for a trip later in the summer or the following year. If it is less than 45 days before your scheduled arrival your deposit & prepayment will be held and credited, in full, for a trip later in the summer or the following year.

At the end of your trip, usually after dinner on the last night, I will present you with a full statement of your trip. This statement will reflect all deposits, prepayments and debts that pertain to your trip. Unless you added some extra funds to your prepayment check to cover things like fly-outs, beer, pop and sundry purchases there is likely to be a small balance owing at this time. **Please remember to bring some form of payment with you.**



**At the request of several of our customers we are proud to announce that we are now able to accept Visa and MasterCard as forms of payment for deposits, prepayments and trip balances. Unfortunately, margins in the fishing lodge business are tight and in an effort to keep my prices as low as possible I am forced to add a 3% service charge to any credit card transactions. If you are uncomfortable with the 3% service charge please do not plan to pay with a credit card.**



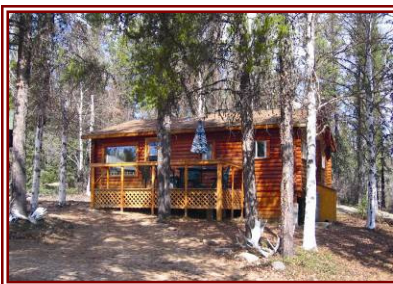
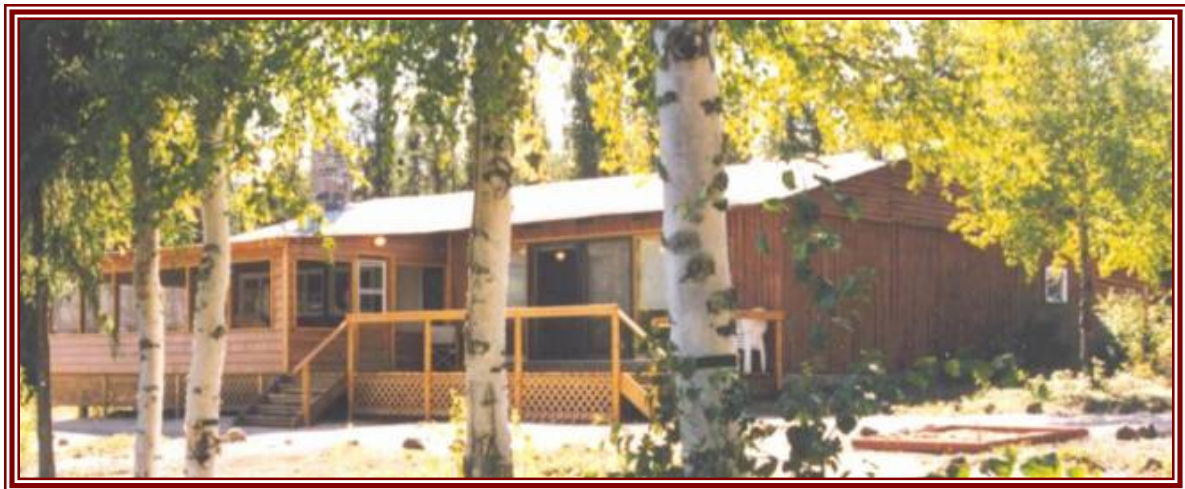
NOTES: \_\_\_\_\_

[illegible]

# SECTION #2-0

## INFORMATION FOR AMERICAN PLAN LODGE FISHERMEN:

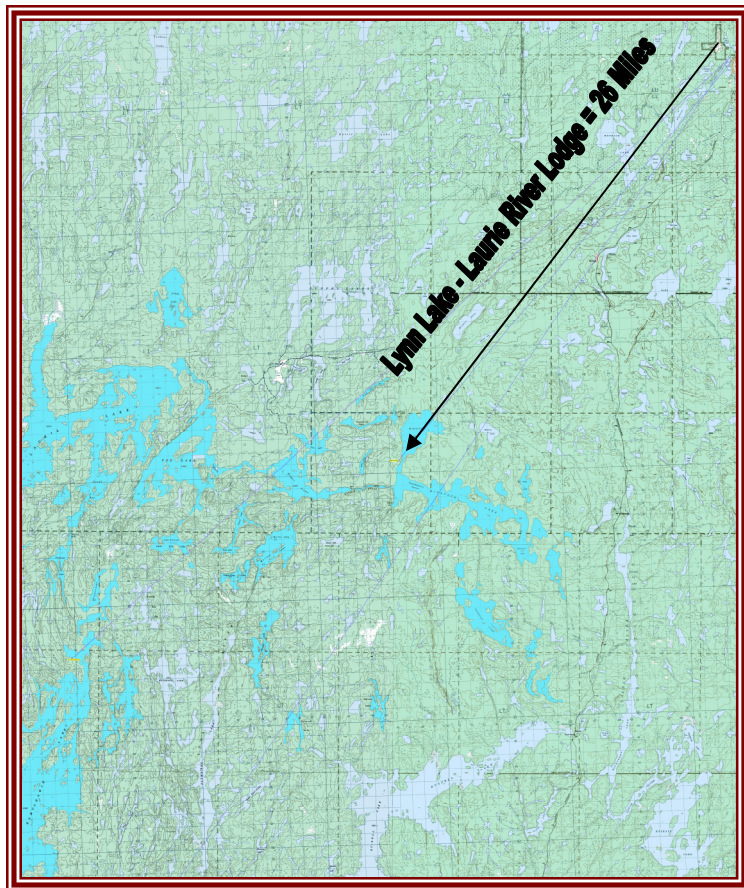
- 2-0 Information for American Plan Lodge Customers
- 2-1 Introduction to American Plan Lodge
- 2-2 Home Base For Your Fly-in Fishing Adventure
- 2-3 American Plan Meals
- 2-4 What To Pack
- 2-5 Trip Costs
- 2-6 Notes Page



## SECTION 2-1 TO OUR AMERICAN PLAN LODGE FISHERMEN:

As fishing lodges go you have chosen the cream of the crop. First class accommodations, top of the line equipment, beautiful main lodge, professional guides, incredible food, full American Plan Service and northern Manitoba's finest fly-in fishing all come together on the picturesque Laurie River System just 30 air miles southwest of Lynn Lake Manitoba.

While you are a guest at Laurie River Lodge you will have access to the entire first 40 miles of the Laurie River System from the Laurie Lake headwaters on the Saskatchewan / Manitoba border through the abundant Lake Trout waters of Tod Lake then down stream into some incredible Pike and Walleye habitat on Eager and Pyta Lakes and finally emptying into McGavock Lake where Laurie River Lodge is actually located. The picturesque beauty and abundant fish have kept fishermen returning to Laurie River Lodge since 1964. Our catch and release and barbless fishing policies ensure that this incredible fishery will remain strong for your children and grandchildren to enjoy in the years to come. In addition to the main chain of lakes that make up the Laurie River System there are several lakes within 30 air miles of Laurie River Lodge. These lakes are accessible only by air and offer adventurous fishermen their own lake for the entire day. Fly-outs are conducted with our fully restored DeHavilland Beaver aircraft and are setup to give each fisherman a full nine hours of fishing on each daily fly-out yet get everyone home in time for a specially prepared gourmet dinner.



### ***LAURIE RIVER LODGE***

*Strategically located in the heart of northern Manitoba's finest Northern Pike, Walleye and Lake Trout habitat Laurie River Lodge offers discriminating fishermen access to the first 40 miles of the Laurie River and several other lakes in the area south west of Lynn Lake, Manitoba. There is more water than even our 8-day customers can hope to see in a single trip.*

*It is about an 18 minute float plane ride from Lynn Lake to Laurie River Lodge.*

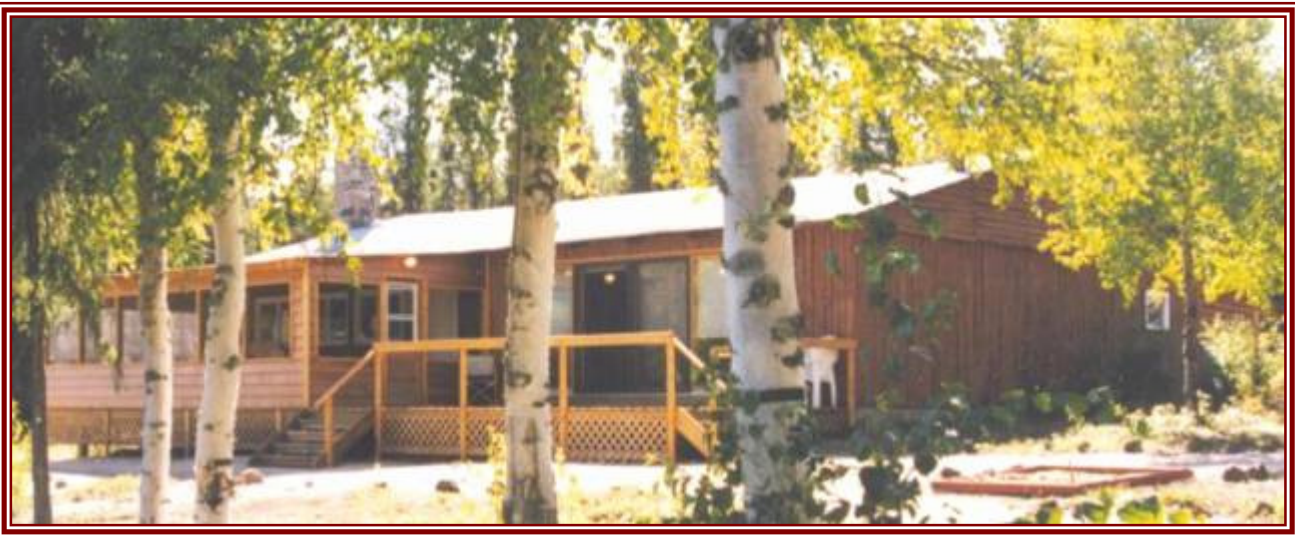


## SECTION 2-2 HOME BASE FOR YOUR NORTHERN MANITOBA AMERICAN PLAN FLY-IN FISHING ADVENTURE:

Laurie River Lodge is actually a complex of buildings constructed on the West shore of McGavock Lake. The complex consists of a 40' by 60' main lodge, four 20' by 20' guest cabins, two 40' by 40' guest cabins, a 30' by 30' office building, a 24' by 70' staff cabin and several guide accommodations. Depending on the size of your group you will be housed in one of our fully modern guest cabins.

Each cabin has private bedrooms, fully modern bathrooms, hot showers, comfortable beds, large living rooms, and 8' by 16' decks overlooking McGavock Lake.

We are running 16 ½' Alumarine Boats & 25 HP Mercury Motors. Each boat is equipped with padded swivel seats, casting decks, nets, landing cradles, anchors, paddles, and a Transport Canada Approved life saving / emergency kit.



*ALL OF OUR ACCOMMODATIONS OVERLOOK THE BEAUTIFUL WEST END OF MCGAVOCK LAKE.*

## SECTION 2-3 OUR AMERICAN PLAN MEALS:

Laurie River Lodge has always been famous for its food. Guests will enjoy the hearty combination of Red River Cereal, meats, pancakes, eggs, cold cereal and fresh fruits for breakfasts but the mouth really starts to water when your mind wanders through our dinner entrees. Just think about it, A Prime Standing Rib Roast with Twice Baked Potatoes, Chicken Breast in Tequila Lime Sauce, Thanksgiving Dinner with all the trimmings, French Cut Veal Chops in a White Wine & Butter Sauce on a bed of Manitoba Wild Rice, Pork Tenderloin in a Black Current Gin Sauce, Cajun Style Cornish Game hens, even Porterhouse “T” Bone Steaks cooked to perfection outdoors over a bed of coals. Don’t forget the daily shore lunches. Fresh caught Walleye, Onions, Potatoes, Beans, Corn and perhaps a cold Molson Canadian to wash it all down. Are you hungry yet? **If you need more information about our meal program at Laurie River Lodge please feel free to call me. In most cases we can handle any special dietary need of our customers, don’t be afraid to ask. If it can be done we will do it.**

## SECTION 2-4 WHAT TO PACK FOR YOUR AMERICAN PLAN TRIP:

Section 1-5 pretty much covers the clothing and personal gear you need to bring on the American Plan Lodge trip. The cabins have propane heaters that will dry clothing and we have washing machines and clothes dryers available for customers that find themselves short on clean clothes. Having more services available means that you don’t have to bring as much with you, however, you must keep in mind that good raingear and warm clothing that can be worn in layers is the best insurance against the elements. As the saying goes you can always take it off. Please be prepared for bad weather, the surest way to conjure up a rainstorm is to leave the lodge without your rain gear. **If your baggage weighs more than 50 lbs you will be subject to excess baggage charges.**

Here is a list of what I suggest for a 4-day trip:

- **Identification, Passports, Airline Tickets, Check Book and Travelers Checks**
- Personal Items, tooth brush, comb, deodorant razor & shampoo
- Medications, prescription drugs, Advil or Alive for sore muscles
- Contact solution & extra contacts or glasses
- Camera, extra batteries and plenty of film if the camera requires it.
- Small flashlight with extra set of batteries for finding your way to the cabin after dark
- **Good quality, two piece, Suite Type Rain Gear – not a poncho**
- One pair ankle high waterproof boots or shoes
- One pair of light shoes to change into after fishing
- A hat that protects you from the sun
- 1 pair of light gloves
- 1 small can bug repellent
- 1 small bottle sunscreen
- Cigarettes as required – your vacation is not the time to try to stop smoking
- 2 pairs of fishing clothes and one set of travel clothes. 8-day customers should bring a couple of extra sets of fishing clothes.
- Polarized Sun Glasses (Rapala makes an excellent set of fishing glasses)
- A Leatherman or Gerber folding tool is handy but not essential

Please note each set of fishing clothes should consist of a good thick pair of socks, unrestricting under garments, loose fitting trousers, “T” shirt and sweater and a light wind breaker type jacket. For the first and last 6 trips I suggest adding a pair of long handled underwear as well.

## SECTION 2-5 LET'S TALK ABOUT COSTS:

If you read through section 1-9 you already know what is included in your selected trip and since you have already booked your trip and purchased your tickets into Winnipeg (I hope) you have a pretty good idea what the base price of your trip. What you might be wondering is what are some of the incidental charges that you might incur. **Please remember that many of the prices below are estimates and others, like gratuities, are at the discretion of the fisherman.**

**All funds are quoted in US \$\$**

The 2012 Manitoba Non-resident Fishing License is \$ 55.00 US

The Manitoba Provincial Sales Tax is calculated at 3.5% of your base price and 7 % on Sundry items

The Federal Goods and Services Tax is calculated at 2.5%.

Daily Fly-outs = \$375.00 / Fisherman / Fly-out

Beer = \$5.00 / bottle

Pop = \$2.00 / can

Wine = \$20.00 – \$80.00 / bottle.

Shirts, hats, other sundry items = \$2.00 – \$85.00

Gratuities: Kitchen staff = \$30.00 / guest / day, Dockhand = \$10.00 / guest / day, Guide \$50.00 / guest for the trip + \$25.00 / trophy fish.

I realize that a fishing trip to Laurie River Lodge is not an inexpensive adventure but when you consider where you are going and the operational expenses related to running a first class fly-in fishing lodge in a remote setting I am sure you will agree that our prices are not out of line. I can assure you that Erin and I will do our very best to insure that you get every pennies worth.

Forms of Payment:

- Personal Check
- Corporate Check
- Travelers Checks
- Visa or MasterCard **with a 3% service charge**



NOTES: \_\_\_\_\_

[illegible]



# SECTION #3-0

## INFORMATION FOR KAMUCHAWIE OUTPOST CAMP FISHERMEN

- 3-0 Information for Kamuchawie Outpost Camp Customers
- 3-1 Introduction to Kamuchawie Outpost Camp
- 3-2 Modern Facilities – Beautiful Lake
- 3-3 Food Package
- 3-4 What To Pack
- 3-5 Guide Information
- 3-6 Emergency Communications
- 3-7 Trip Costs And Options
- 3-8 Notes Page



## SECTION 3-1 INTRODUCTION:

When the old outpost camp on Kamuchawie Lake burned down in July of 2005 Erin and I were devastated. We loved that camp and it caused great sorrow to see it go. Perhaps that is the reason that we spent so much time and money rebuilding the new camp on this fantastic Lake. We, once again, have a camp that is up to our standards.

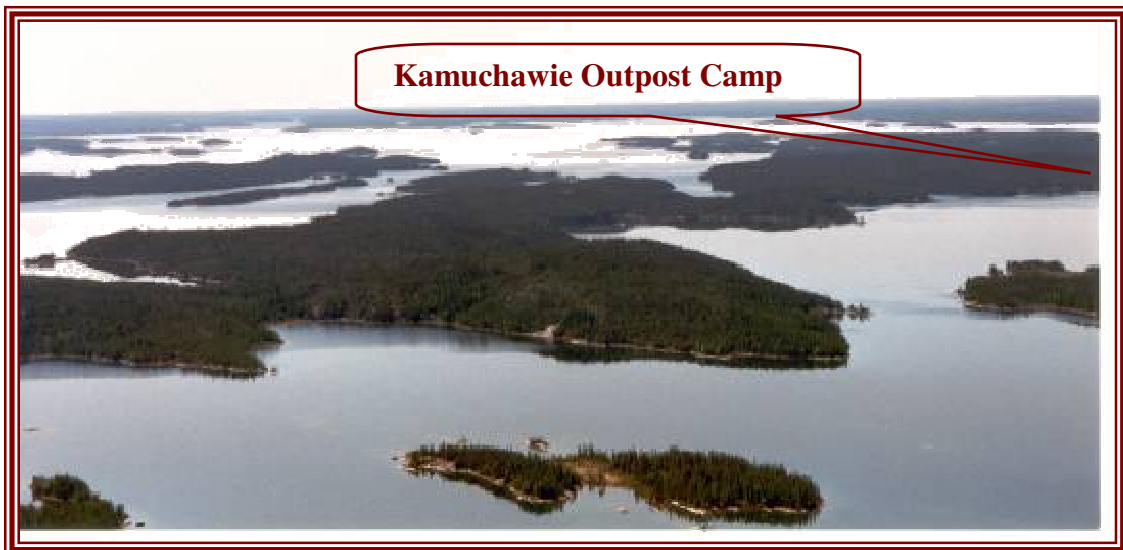
Located 56 air miles Southwest of the small mining town of Lynn Lake, MB, Kamuchawie Outpost Camp offers fishermen access to over 20 miles of the cleanest, clearest most beautiful water in Manitoba. The lake is unbelievably productive for Northern Pike and Lake Trout. During your stay you will probably have the opportunity to view some of Manitoba's majestic wildlife in its most natural and uncontained state. Moose, Caribou, Black Bears, Wolves, Eagles, Loons and a host of Fur Bearing animals all call Kamuchawie Lake home.





## SECTION 3-2 MODERN FACILITIES – BEAUTIFUL LAKE:

Kamuchawie Outpost Camp is a 24' by 32' cabin with 3 private bedrooms, indoor bathroom facilities, hot showers, and a full kitchen. It has room for 10 but comfortably sleeps 6 – 7 fishermen. There is a 110 V generator and a sand point well that provides unlimited crystal clear water for the bathroom, showers and kitchen. A pressurized water system provides water for the bathroom and kitchen while the 40 gallon propane fired hot water heater provides plenty of hot water for showers.



## SECTION 3-3 OUTPOST FOOD PACKAGE:



CAN THE CHEF IN YOUR FISHING PARTY DO THIS?

PART OF OUR FOOD PACKAGE IS ALL THE FIXINGS FOR DAILY SHORELUNCH.

CAN'T YOU JUST TASTE IT?

A big part of any outpost trip is planning and preparing the meals. It seems like nearly every group of outpost fisherman had its own chef. He is the fellow who prides himself on his cooking ability and he is good enough at it that his buddies will actually agree to do the dishes if he will do the cooking. If you are that guy I can help you put together the perfect food package.

Since a number of our outpost customers plan to drive all the way to Lynn Lake and bring their food package with them I have priced our packages with a food package as an option. The cost will normally run about \$40.00 / guest per day. Here is what the basic food package contains:

### Meats

Bacon  
Cheese  
Chicken  
Eggs  
Ham  
Hamburger  
Hot Dogs  
Pork Chops  
Sausage  
Steaks

### Canned Goods

Corn - Creamed  
Corn - Nibbles  
Evaporated milk  
Fruit  
Green beans  
Mixed Soups  
Mushrooms  
Peas  
Pickles

Pork & Beans  
Spaghetti Sauce  
Spaghetti Sauce  
Tomatoes

### Fresh Fruit, Veggies

Apples  
Carrots  
Lettuce  
Onions  
Oranges  
Potatoes  
Tomatoes

Dry goods & Bread:  
Assorted Chips  
Assorted Chocolate Bars  
Assorted Cookies  
Brown Sugar  
Coffee  
Cold Cereals  
Corn meal  
Flour  
Hamburger Buns  
Hot Cereal

Hot Coco  
Hot Dog buns  
Macaroni & cheese  
Dinner  
Minute Rice  
Pancake Mix  
Pop Corn  
Powdered Juice  
Snack Crackers  
**Snack Puddings**  
Soda Crackers  
Spaghetti  
Tea Bags  
White Bread

### Condiments & Liquids

Assorted Jams  
Barbecue Sauce  
Butter  
Garlic Salt  
Honey  
Ketchup  
Lard  
Lemon juice  
Margarine  
Mayonnaise  
Milk

Mustard  
Relish  
Salt & Pepper  
Seasoning Salt  
Soy Sauce  
Sugar  
Syrup  
Vegetable Oil  
Vinegar

### Miscellaneous & Paper Goods

Aluminium Foil  
Candles  
Dish Soap  
Dish Towels  
Garbage Bags  
Matches  
Mosquito Coils  
Paper towels  
Plastic Wrap  
Scouring Pads  
Tea Towels  
Toilet paper  
Tooth Picks  
Zip Lock Bags

## SECTION 3-4 WHAT TO PACK FOR YOUR OUTPOST TRIP:

Unlike the guests staying at Laurie River Lodge Kamuchawie Outpost Customers do not have access to washing machines and clothes dryers. We do, however, have a clothes drying rack by the wood stove and it is possible to wash clothes in the sink or shower and then hang them out to dry. Still it is probably a good idea to bring enough clothing to get you through the week without washing. For 8-day customers I suggest 4 pairs of fishing clothes and one set of travelling clothes. In addition to good rain gear you will also need things like sweat shirts and sweat pants that can be worn in layers and added or removed as the weather dictates. All the things that were mentioned in section 1-5 + a couple more warm shirts and sweat pants should do you. If you like an after dinner cocktail I suggest bringing a bottle of your favourite alcohol or arranging to purchase on from me.

Here is a list of what I suggest for a 4-day trip:

- **Identification, Passports, Airline Tickets, Check Book and Travelers Checks**
- Personal Items, tooth brush, comb, deodorant razor & shampoo
- Medications, prescription drugs, Advil or Alive for sore muscles
- Contact solution & extra contacts or glasses
- Camera, extra batteries and plenty of film if the camera requires it.
- Small flashlight with extra set of batteries for finding your way to the cabin after dark
- **Good quality, two piece, Suite Type Rain Gear – not a poncho**
- One pair ankle high waterproof boots or shoes
- One pair of light shoes to change into after fishing
- A hat that protects you from the sun
- 1 pair of light gloves
- 1 small can bug repellent
- 1 small bottle sunscreen
- Cigarettes as required – your vacation is not the time to try to stop smoking
- 2 pairs of fishing clothes and one set of travel clothes. 8-day customers should bring a couple of extra sets of fishing clothes.
- Polarized Sun Glasses (Rapala makes an excellent set of fishing glasses)
- A Leatherman or Gerber folding tool is handy but not essential
- Alcohol as required

Please note each set of fishing clothes should consist of a good thick pair of socks, unrestricting under garments, loose fitting trousers, “T” shirt and sweater and a light wind breaker type jacket. For the first and last 6 trips I suggest adding a pair of long handled underwear and a couple of extra under shirts as well.

## SECTION 3-5 – GUIDES FOR KAMUCHAWIE OUTPOST CUSTOMERS:

Guides are not required at Kamuchawie Outpost Camp; however, because Kamuchawie is a relatively large body of water it can be a bit daunting at first. I strongly suggest that first time customers enlist the services of a guide for at least the first couple of days. A professional guide can really increase your knowledge of the lake and help you enjoy everything that Kamuchawie Lake has to offer.

I have several guides that have an intimate knowledge of Kamuchawie Lake. Should you decide to enlist their services they will bring their own camp and food package. They will look after the boats and motors as well as make your shore lunch every day.

## SECTION 3-6 – EMERGENCY COMMUNICATIONS:

Whenever you send someone out in to a remote location and leave them there is always a concern that at some time during their trip they are going to need assistance. For this reason I have equipped all of my camps with hand held satellite telephones.

The telephones allow our customers to call us immediately if someone should get hurt, become ill or have other difficulties. In addition I expect all customers to check in with us at the main lodge at least once a day. A quick call to the main lodge only takes a minute or so and lets me get a good nights sleep without worrying about my outpost customers.

## SECTION 3-7 TRIP COSTS AND AVAILABLE OPTIONS:

Because of its remote location Kamuchawie Outpost customers have less available in the way of options but there are still a few things that are not included in our package price.

In addition, a number of our outpost customers come from northern Minnesota and North Dakota. It is quite easy for those fishermen to drive to Lynn Lake in a single day. For those that drive to Lynn Lake it simply makes sense to stop in Winnipeg or Thompson and purchase their food package. For that reason I have priced my outpost trips from Lynn Lake with flights from Winnipeg and food packages as options.

The 2012 Manitoba Non-resident Fishing License is \$ 55.00 US

The Manitoba Provincial Sales Tax is calculated at 3.5% of your base price and 7 % on Sundry items

The Federal Goods and Services Tax is calculated at 5 %

Beer = \$4.00 / bottle

Pop = \$2.00 / can

Hard Liquor = \$40.00 / 26 oz bottle

Professional Cree Indian Guides = \$175.00 / guide / day

Comprehensive Food Package = \$40.00 / guest / day

Round Trip Winnipeg – Lynn Lake = \$750.00 US / Guest

Forms of Payment:

- Personal Check
- Corporate Check
- Travelers Checks
- Visa or MasterCard with a 3% service charge



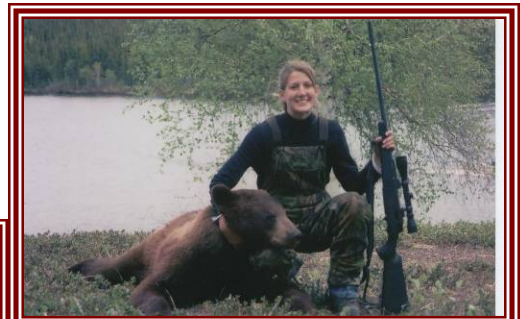
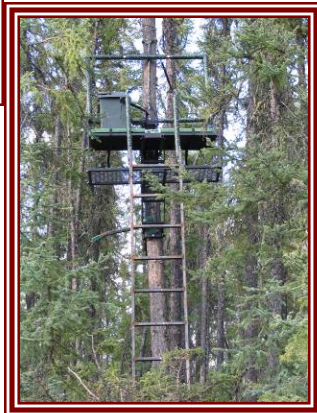
[illegible]



# SECTION #4-0

## SPRING BLACK BEAR HUNTING INFORMATION

- 4-0 Information for Spring Black Bear Hunters
- 4-1 Introduction To Various Camps, Including Accommodations
- 4-2 What You Need To Do To Insure Success
- 4-3 Choosing A Weapon
- 4-4 How Do I Get My Weapon Into Canada
- 4-5 Information About The Camps
- 4-6 Emergency Communications
- 4-7 What To Pack
- 4-8 Trip Costs
- 4-9 Notes Page



## SECTION 4-1 SPRING BLACK BEAR INTRODUCTION:

In addition to some really great fishing northern Manitoba also boasts an incredibly high Black Bear Population. We offer Black Bear hunters the opportunity to hunt at one of 4 locations scattered throughout roughly 1600 square miles of northern Manitoba wilderness.

For those who like to be pampered while they hunt we can accommodate 6 hunters right at the American Plan Lodge. For those who don't mind helping with the cooking and cleaning but still like the idea of solid walls, indoor plumbing, hot showers and 110 V electricity we can accommodate 6 hunters at our outpost camp on Kamuchawie Lake and for those who really like to rough it we can accommodate 6 hunters at our ultra remote tent camps on Runner Lake and Murray Lake. **All trips combine hunting and fishing.**

## SECTION 4-2 WHAT YOU CAN DO TO HELP ENSURE YOUR SUCCESS:

While hunting for Black Bears cannot be considered terribly difficult it does take a certain amount of planning and dedication on the part of the hunter to ensure success. The most common cause of failure for our bear hunters is imperfect shot placement. **I cannot stress enough the importance of practicing with your weapon before going into the field. All of our stands are located between 12 and 40 yards from the bait and 8 to 12 feet above the ground so practice at that distance and height. Remember a wounded bear ends your hunting trip so be sure of your shot before you pull the trigger or release the string!!** Remember as a member of the hunting community you have a responsibility be sure that the animals you harvest are not allowed to suffer because of you actions.

We will make every effort to recover a wounded animal but please remember that bears do not track easily. Their feet do not have hard edges like deer so they do not leave a defined track in the moss and a thick layer of fat under their hide along with an even thicker coat of hair on the outside tend seal up holes and restrict bleeding. In addition bears are very stoic animals. They can withstand an incredible amount of trauma to non-vital areas of their body and still run away. **Shot placement (not calibre size) is critical to your success.** If your animal gets more than 100 yards from where you shot him the likelihood of finding him drops dramatically.

**PRACTICE, PRACTICE, PRACTICE!!**

## SECTION 4-3 CHOOSING A WEAPON:

Without a doubt the most commonly asked question I hear is what weapon should I bring? I always give the same answer. **You should choose the weapon that you feel the most comfortable with.** In order to stay compliant with the law you have your choice of a rifle with a calibre of .23 or better, a bow with a draw weight of 65 lbs or more or a shotgun loaded with slugs. Pistols and crossbows are not allowed in Canada. Nearly all of today's center fire hunting rifles are quite capable of harvesting an adult Black Bear. Remember it doesn't matter how big the hole in his lungs is – as long as it is in his lungs!! Having said that I will add that **I do not feel that a 243 Winchester or 16 gauge shotgun slugs are adequate for this kind of hunting and I advise a larger weapon.**

In recent years bow hunting for Black Bear has become a very popular sport. At Laurie River Lodge we welcome bow hunters and have several stands setup at close range just of them. In fact our success rate for archery hunters is actually higher than our success rate for rifle hunters (although both hover near 100%) However, even more than rifle hunters bow hunters must be proficient with their weapons. The new technology that is found in today's archery equipment is vastly superior to anything that bow hunters have had available to them in the past and it really gives modern day bow hunters a distinct advantage over years past BUT you still need to hit your animal in the right place! I recommend a heavier weight carbon arrow for strength and penetration along with a really good quality broad head like the Muzzy 3 blade in 125 grain weight. I do not recommend any type of mechanical broadhead. Remember, depending on the camp you

choose you will be from 25 to 100 miles in the bush and the nearest archery store is a long long ways away. Anything that moves can break, keep it simple.

## SECTION 4-4 HOW DO I GET MY WEAPON INTO CANADA:

Many hunters travelling to Canada for the first time are concerned about crossing the border with a weapon. If you are not properly prepared it is likely that your concerns are valid. However, after several years of outfitting for Black Bears in northern Manitoba I can honestly say that I have never had a hunter have a hard time getting his weapon across the border. If you are properly prepared you will find that bringing your gun to Canada is simply a matter of having the proper paperwork correctly filled out and ready to be presented to a Canadian Customs Officer when you clear customs.

For hunters who choose to hunt with archery equipment there is no paperwork requirements. You will be asked the same questions that all visitors to Canada are asked, you will need the same identification and you will need to declare that you are going on a hunt and will be using archery equipment. Please see section **1-3 CROSSING THE BORDER** for more detailed information.

For hunters who choose to hunt with a rifle or shotgun the process is a little more complicated. In addition to the requirements mentioned in section # 1-3 **you will need to obtain a Non-resident Firearm Declaration Form and fill it out prior to arriving at the Canadian border.** I should have already sent you a form but if I did not or if you have misplaced it you can download another one from the Canadian Firearms Center Web Site at [www.rcmp-grc.gc.ca/](http://www.rcmp-grc.gc.ca/). From here click on English. When the page opens up look on the right side under quick links for the Canada Firearms Program and click on it. When this page opens look for the word forms under the quick links section on the left side of the page and click on it. Once the forms page opens scroll down to the non-resident section and look for form CAFC 909. You can fill it out on line and then print it. **The form must be filled out in triplicate but do not sign it until you are in front of a Canadian Customs and Immigration Officer.** There is also a \$50.00 fee to bring a firearm into Canada. The fee may be paid in cash or with credit card. The Customs Office may or may not want to see your firearm. It has been my experience that if you have the required paperwork and are aware of the \$50.00 charge the Customs Official rarely looks at the firearm.

## SECTION 4-5 INFORMATION ABOUT THE VARIOUS CAMPS:

I have already touched a little on what you can expect to find at each of the various camps so I expect that you know pretty much what to expect in the way of accommodations and facilities but you still might be wondering about things like food, fishing time, emergency communications, and location.

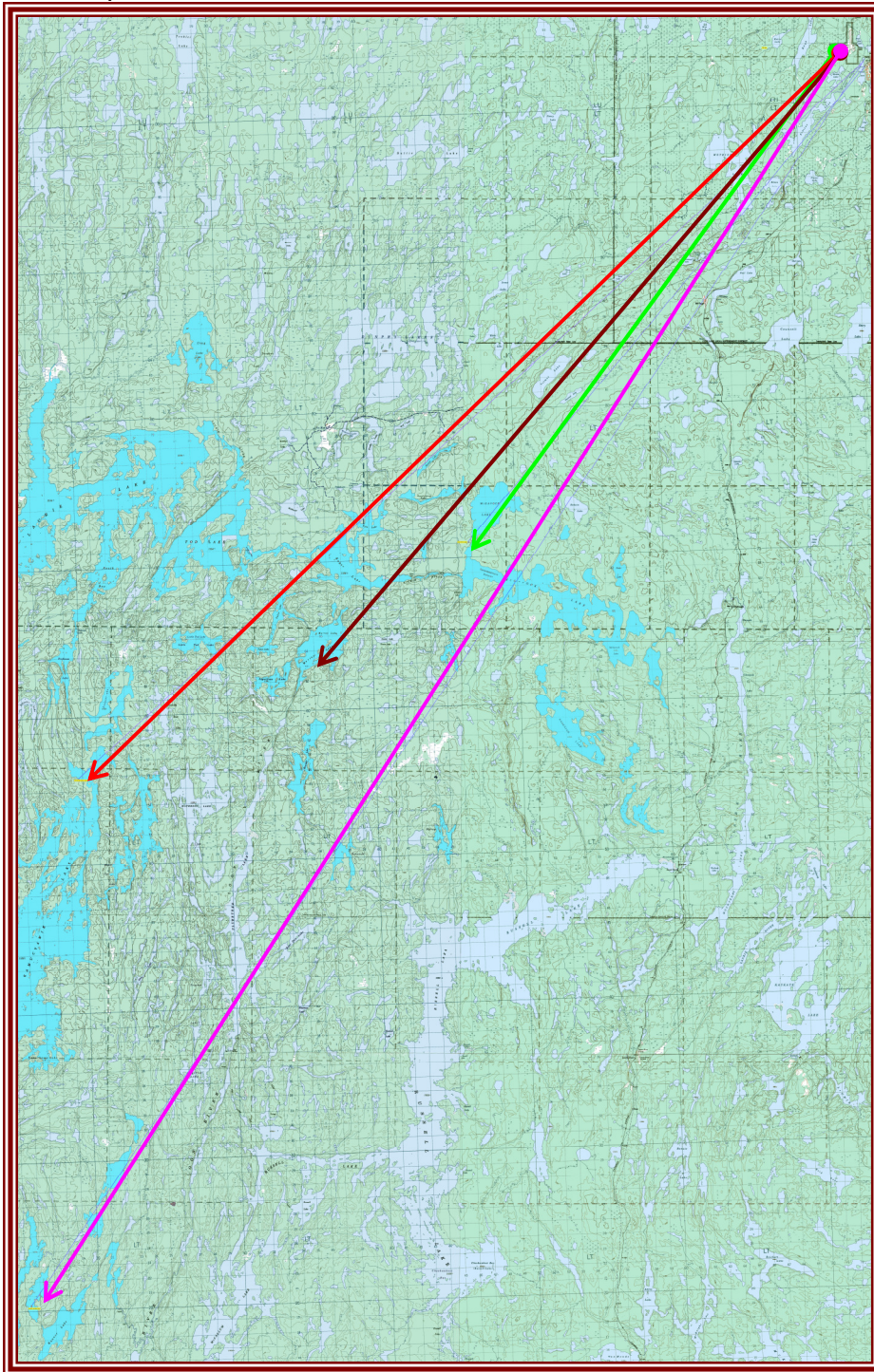
Hunters choosing to hunt from the comfort of our main lodge (McGavock Lake Hunt Camp) will be housed in the same cabins as our fisherman. They eat the same meals (although much later in the evening) as our the rest of the guests and as a rule they spend their mornings fishing, have shorelunch with the rest of the guests then make their way back to camp for a short nap before heading out to the bear stands for an afternoon and evening hunt. We normally try to get the hunters on the stand between 3:30 and 4:30 PM. They will be picked up at approximately 11:00 PM.

Hunters who choose Kamuchawie Lake as their hunting grounds will be housed in our modern outpost facilities located on the North end of this magnificent lake. While the facilities at Kamuchawie Lake are modern it is an outpost camp and the guests are expected to do some small chores like helping with dishes and carrying firewood. The camp manager and guides will do the majority of the baiting and cooking but help is always welcome and it means more fishing time for everyone. If you wish there is plenty of fishing time from after breakfast until about 1:00 PM when it will be time to make your way back to the cabin to get ready for an afternoon and evening of hunting. Again we would like to have everyone on the stand by 4:30 PM and you will be picked up approximately 11:00 PM.



Hunters who choose either the Murray Lake Tent Camp or the Runner Lake Tent Camp can look forward to a real back to nature hunt. These are tent camps in every sense of the word but they are both equipped with hot showers, propane cook stoves and private sleeping quarters. There is a camp manager and guides on hand but, like the Kamuchawie Outpost Hunters, hunters at Murray and Runner are expected to help out with the camp chores. The Manager and guides will do most of the cooking and baiting so general cleanup is really the biggest chore. Like the other two camps you should plan to fish in the morning and hunt from 3:30 PM until 11:00 PM.

This map should give you a pretty good idea of where the various camps are located in relation to the Lynn Lake airport.



**Green Line: Lynn Lake – McGavock Lake (main lodge) Bear Camp = 26 Air Miles**

**Wine Line: Lynn Lake – Murray Lake Bear Camp = 38 miles**

**Red Line: Lynn Lake – Kamuchawie Lake Bear Camp = 56 miles.**

**Magenta Line: Lynn Lake – Runner Lake Bear Camp = 75 miles**

Whenever you send someone out in to a remote location and leave them there is always a concern that at some time during their trip they are going to need assistance. This is especially true when there are guns and knives involved. For this reason I have equipped all of my camps with hand held satellite telephones.

The telephones allow our customers to call us immediately if someone should get hurt, become ill or have other difficulties. In addition I expect each camp to check in every evening after all the hunters are safely back to camp. Each hunter will be issued a hand held radio to take to the stand with him. Although the radios will not reach back to the main lodge they will, in most cases, reach your guide. If you find yourself in trouble use the radio.

## SECTION 4-7 WHAT TO PACK:

Remember spring Black Bear hunters do not have access to washing machines and clothes dryers. You will need to bring enough clothing to get you through the week without washing. I suggest 4 pairs of fishing clothes and one set of travelling clothes. In addition to your camouflage hunting clothes and good rain gear you will also need things like sweat shirts and sweat pants that can be worn in layers and added or removed as the weather dictates. Spring time temperatures can climb above 80 F in the daytime and drop to below freezing as soon as the sun drops below the horizon. You will need all the things that were mentioned in section 1-5 + your hunting clothes and a couple more warm shirts and sweat pants. If you like an after dinner cocktail I suggest bringing a bottle of your favourite alcohol or arranging to purchase one from me.

Here is a list of what I suggest for an 8-day trip:

- **Identification, Passports, Airline Tickets, Check Book and Travelers Checks**
- Personal Items, tooth brush, comb, deodorant razor & shampoo
- Medications, prescription drugs, Advil or Alive for sore muscles
- Contact solution & extra contacts or glasses
- Camera, extra batteries and plenty of film if the camera requires it.
- Small flashlight with extra set of batteries for finding your way to the cabin after dark
- **Good quality, two piece, Suite Type Rain Gear – not a poncho**
- One pair ankle high waterproof boots or shoes
- One pair of light shoes to change into after fishing
- A hat that protects you from the sun
- 1 pair of light gloves
- 1 small can bug repellent
- 1 small bottle sunscreen
- Cigarettes as required – your vacation is not the time to try to stop smoking
- 3 pairs of fishing / hunting clothes and one set of travel clothes.
- Polarized Sun Glasses (Rapala makes an excellent set of fishing glasses)
- A Leatherman or Gerber folding tool is handy but not essential
- Alcohol as required

Please note each set of fishing / hunting clothes should consist of a good thick pair of socks, unrestricted under garments, loose fitting trousers, "T" shirt and sweater and a light wind breaker type jacket. For Spring Bear Hunters I suggest adding a pair of long handled underwear and a couple of extra under shirts as well.

In an effort to help our hunting customers under the 50 lbs / person weight limit I will be happy to supply you with fishing gear and lures.

## SECTION 4-8 TRIP COSTS:

As you know the base price of your trip will vary depending on which camp you choose but in all cases the base price for an 8-day combination hunting / fishing trip will be between \$3975.00 and 4375.00 US / hunter. Included in the base price is:

Round trip airfare from Winnipeg to Lynn Lake

- Float plane transportation to the appropriate camp
- Guide services
- All food
- Appropriate accommodations

Not included in the base price:

- |  |  |
|--|--|
| • Round trip airfare from your home to Winnipeg  | \$550.00 approximately                     |
| • Manitoba Non-resident Black Bear Licence       | \$385.00 (includes a \$100.00 Habitat fee) |
| • Manitoba Non-resident Fishing License          | \$55.00                                    |
| • Hotel and dinner in Winnipeg on your way North | \$100.00 approximately                     |
| • Alcohol and sundry purchases                   | ?????????                                  |
| • Gratuities                                     | \$250.00 approximately                     |

Forms of Payment:

- Personal Check
- Corporate Check
- Travelers Checks
- Visa or MasterCard with a 3% service charge



Notes



## SECTION 5-0 CLOSING:

It is my sincere hope that this Trip Planning Guide has helped you prepare for your northern Manitoba fly-in fishing or hunting adventure. If there is something that you need more help with or if you are having trouble finding any of the items mentioned in this guide please feel free to call me at 1-800-426-2533 anytime. I will be happy to assist you.

Thank you again for choosing Laurie River Lodge as the venue for your next northern Canadian fly-in fishing or hunting trip. Erin, the kids and I are looking forward to seeing you at our little bit of paradise in northern Manitoba during the 2012 season.

Have a great day.

Sincerely,

*Brent*

Brent, Erin, Chase & Madison Fleck  
Laurie River Lodge

## SECTION 5-1 IMPORTANT TELEPHONE #S AND E-MAIL ADDRESSES:

<b>Laurie River Lodge</b>	<b>1-800-426-2533</b>	<a href="mailto:laurieriverlodge@telus.net">laurieriverlodge@telus.net</a>
<b>Silvana@ Canada One Travel</b>	<b>1-204-975-4785</b>	<a href="mailto:svincent@canada-one.com">svincent@canada-one.com</a>
<b>Sheraton 4 Points</b>	<b>1-204-775-5222</b>	<a href="mailto:sales@fourpointswinnipeg.com">sales@fourpointswinnipeg.com</a>
<b>Northwest Airlines</b>	<b>1-800-225-2525</b>	<a href="http://www.nwa.com">www.nwa.com</a>
<b>United Airlines</b>	<b>1-800-864-8331</b>	<a href="http://www.ual.com">www.ual.com</a>
<b>529 Wellington</b>	<b>1-204-487-8325</b>	<a href="http://www.OPENTABLE.COM.com">www.OPENTABLE.COM.com</a>

**Laurie River Lodge Winter Address:**  
**(September 15<sup>th</sup> - May 15<sup>th</sup>)**  
**RR#2**  
**Ponoka, AB Canada**  
**T4J 1R2**

**Laurie River Lodge Summer Address:**  
**(May 16<sup>th</sup> – September 14<sup>th</sup>)**  
**PO Box 550**  
**Lynn Lake, MB Canada**  
**R0B 0W0**